

## SALES OFFER

### Company details:

**Newborn Plastic Sp. Z o.o.**

**ul. Leśna 11, 36-100 Kolbuszowa, POLAND**

**NIP: 814 167 11 37**

The company **Newborn Plastic Sp. Z o.o.**, based in Kolbuszowa, began its activity in the recycling market in 2012, however, our experience is more than 20 years of activity and expansion of knowledge in the plastics industry.

We deal extensively with the recycling process, starting with obtaining waste, processing it and returning it to reuse in production processes.

In its business, Newborn Plastic focuses on the highest quality of its products followed by 100% satisfied customers.

Divided into several sectors, the company is engaged in separate processes of washing, granulation and production of finished products.

By processing secondary raw materials, we reduce the consumption of primary raw materials, which translates into the protection of the environment and natural resources.

The main goal of Newborn Plastic is to provide professional service tailored to the needs of each customer, which results in customer satisfaction and also to constantly strengthen its position in the market.



**NEWBORN PLASTIC Sp. Z o.o.**

ul. Leśna 11, 36-100 Kolbuszowa, POLAND

NIP: 814-167-11-37

REGON: 180609017

**biuro@newbornplastic.pl**

Landline. +48 17 22 88 510

Mob. phone +48 605 170 703



**NEWBORN PLASTIC PRODUCT OFFERING.  
-FOILS -**

**NEWBORN PLASTIC Sp. Z o.o.**  
ul. Leśna 11, 36-100 Kolbuszowa, POLAND  
NIP: 814-167-11-37  
REGON: 180609017

**biuro@newbornplastic.pl**  
Landline. +48 17 22 88 510  
Mob. phone +48 605 170 703



PRODUCT	MATERIAL	COLOR	OPTIONS	DIMENSIONS
<p><b>FOIL SLEEVE</b> ( with or without an overlay)</p> <p><b>FOIL HALF-SLEEVE</b> ( with or without an overlay)</p> <p><b>TAPE, DOUBLE TAPE</b></p>	<p>LDPE/LLDPE/MDPE</p> <ul style="list-style-type: none"> <li>• REGRANULAT</li> <li>• OFF GRADE</li> <li>• NEAR TO PRIME</li> <li>• PRIME</li> </ul>	<ul style="list-style-type: none"> <li>• TRANSPARENT</li> <li>• COLOURED</li> <li>• TRANSPARENT</li> <li>• DYED IN THE MASS</li> <li>• IN ANY COLOR</li> </ul>	<ul style="list-style-type: none"> <li>• SURFACE ACTIVATION</li> <li>• PRINTING</li> <li>• LAMINATION</li> </ul>	<p><b>FELT SLEEVE/HALF FOIL SLEEVE/TAPE</b></p> <p><b>FLAT WITHOUT OVERLAPS</b></p> <p>Thickness: from 18 µm - 150 µm Width: from 300mm- 1800mm</p> <p><b>FELT SLEEVE/HALF FOIL SLEEVE</b></p> <p><b>WITH OVERLAPS</b></p> <p>Thickness: from 18µm - 150µm Width: 250mm-1000mm</p>
<p><b>BAGS ON A ROLL: HOODS/ PALLET LINERS</b></p>			<ul style="list-style-type: none"> <li>• PERFORATION AND IN-LINE SEALING</li> </ul>	<p><b>FLAT WITHOUT OVERLAPS</b></p> <p>Width: 1000mm-1800mm Sealing and perforation length up to 2700mm</p> <p><b>WITH OVERLAPS</b></p> <p>Width: 1000mm - 4800mm Sealing and perforation length up to 2700mm</p>



Options	Packaging	Transport	Payment
<ul style="list-style-type: none"> <li>▪ <b>Product filling on request</b> (CaCo3, anti-block, anti-slip, slip, UV additive, fragrance additive and others)</li> <li>▪ Preparation of product with desired MFI/MFR</li> <li>▪ Minimum order 500 kg</li> </ul>	<ul style="list-style-type: none"> <li>• The product is wound on TEXTILE THILES with an inner diameter of Fi 76.6mm, wall thickness of 6mm to 15mm.</li> <li>• Full Stretch</li> <li>• Euro pallet</li> <li>• Ability to print labels according to customer requirements with barcodes</li> <li>• Possibility of loading sea containers</li> <li>• Ability to load tanker trucks</li> <li>• Moisture-proof products</li> </ul>	<ul style="list-style-type: none"> <li>▪ We offer the possibility to pick up the goods with our own transport (EXW)</li> <li>▪ We offer the possibility to organize low-cost transportation in Poland, Europe and the Far East (DAP)</li> </ul>	<ul style="list-style-type: none"> <li>▪ First 3 transactions: prepayment</li> <li>▪ Next: payment term 30 days</li> </ul>

## WE INVITE YOU TO CONTACT US:

**Name:**

**e-mail:**

**Contact details:**

**NEWBORN PLASTIC Sp. Z o.o.**  
ul. Leśna 11, 36-100 Kolbuszowa, POLAND  
NIP: 814-167-11-37  
REGON: 180609017

**biuro@newbornplastic.pl**  
Landline. +48 17 22 88 510  
Mob. phone +48 605 170 703



**NEWBORN PLASTIC PRODUCT OFFERING.  
-GARBAGE BAGS-**

**NEWBORN PLASTIC Sp. Z o.o.**  
ul. Leśna 11, 36-100 Kolbuszowa, POLAND  
NIP: 814-167-11-37  
REGON: 180609017

**[biuro@newbornplastic.pl](mailto:biuro@newbornplastic.pl)**  
Landline. +48 17 22 88 510  
Mob. phone +48 605 170 703



PRODUKT	MATERIAŁ	KOLOR	OPCJE	WYMIARY
<b>GENERAL PURPOSE BAGS</b>				<b>ON THE FLAT</b> Width: 200mm - 900mm Length: up to 1200 mm  <b>WITH SCOPES ( circumferentially max.3600mm)</b> Width: 200mm - 900mm Length: up to 1200 mm
<b>GARBAGE BAGS on roll</b>	LDPE/LLDPE/MDPE  <ul style="list-style-type: none"> <li>• REGRANULATE</li> <li>• OFF GRADE</li> <li>• NEAR TO PRIME</li> <li>• PRIME</li> </ul>	<ul style="list-style-type: none"> <li>• YELLOW</li> <li>• RED</li> <li>• BLUE</li> <li>• GREEN</li> <li>• COLORLESS</li> <li>• STRAW</li> <li>• TRANSPARENT</li> <li>• DYED TRANSPARENT</li> <li>• DYED IN ANY COLOR</li> </ul>	<ul style="list-style-type: none"> <li>• STANDARD BAGS OR ACCORDING TO SPECIFICATIONS</li> <li>• IN THE CUSTOMER'S LABEL UNDER HIS BRAND NAME</li> <li>• OVERPRINT COATING</li> <li>• BAGS WITH A STRING TASK</li> <li>• FRAGRANCE ENRICHMENT</li> </ul>	<b>CAPACITY: 35L- 300L</b> <b>Number of pieces per roll: 10pcs-50pcs</b>  Width: 300 mm - 1800 mm Length: from 200mm - 6000mm Thickness: 0.018µm - 0.150µm
<b>GARBAGE BAGS flat bags</b>				<b>ON THE FLAT</b> Width: 200mm - 900mm Length: up to 1200 mm  <b>WITH SCOPES ( circumferentially max.3600mm)</b> Width: 200mm - 900mm Length: up to 1200 mm

### Options

NEWBORN PLASTIC Sp. Z o.o.  
 ul. Leśna 11, 36-100 Kolbuszowa, POLAND  
 NIP: 814-167-11-37  
 REGON: 180609017

### Packaging

biuro@newbornplastic.pl  
 Landline. +48 17 22 88 510  
 Mob. phone +48 605 170 703

### Transport



### Payment

<ul style="list-style-type: none"> <li>▪ <b>Product filling on request (CaCo3, anti-block, anti-slip, slip, UV additive, fragrance additive and others)</b></li> <li>▪ <b>Preparation of product with desired MFI/MFR</b></li> </ul>	<ul style="list-style-type: none"> <li>▪ Bulk packaging – cartons</li> <li>▪ Foil</li> <li>▪ Full stretch</li> <li>▪ Euro or industrial pallet</li> <li>▪ Possibility of loading sea containers</li> <li>▪ Products protected against moisture</li> </ul>	<ul style="list-style-type: none"> <li>▪ We offer the possibility to pick up the goods with our own transport (EXW)</li> <li>▪ We offer the possibility to organize low-cost transportation in Poland, Europe and the Far East (DAP)</li> </ul>	<ul style="list-style-type: none"> <li>▪ First 3 transactions: prepayment</li> <li>▪ Next: payment term 30 days</li> </ul>
--	---	---	--

### WE INVITE YOU TO CONTACT US:

**Name:**

**e-mail:**

**Contact details:**

**NEWBORN PLASTIC Sp. Z o.o.**  
ul. Leśna 11, 36-100 Kolbuszowa, POLAND  
NIP: 814-167-11-37  
REGON: 180609017

**biuro@newbornplastic.pl**  
Landline. +48 17 22 88 510  
Mob. phone +48 605 170 703







**NEWBORN PLASTIC PRODUCT RANGE**  
**-REGRANULATES-**

**NEWBORN PLASTIC Sp. Z o.o.**  
ul. Leśna 11, 36-100 Kolbuszowa, POLAND  
NIP: 814-167-11-37  
REGON: 180609017




**biuro@newbornplastic.pl**  
Landline. +48 17 22 88 510  
Mob. phone +48 605 170 703





PRODUCT	MATERIAL	APPLICATION	CHARACTERISTICS	STANDARD	CERTIFICATE
<b>REGRANULATE LDPE RESULTANT STRAW</b> <i>PREMIUM / STANDARD</i>	Regranulate produced from post-production waste and / or foil originating from selective collection (post-consumer LDPE waste)	<ul style="list-style-type: none"> <li>• <b>EXTRUSION BLOW MOULDING</b></li> <li>• <b>INTJECTION</b></li> </ul>	<b>Density</b> 0,904 ÷ 0,923 g/cm <sup>3</sup> <b>Filling</b> < 4,0 % <b>Moisture</b> < 0,1 % <b>Melt Flow Index MFI</b> 0,4÷1,6 g/10min (190°/2,16kg) <b>Tensile Modulus</b> 220÷300 MPa <b>Tensile Strength</b> 12,0÷13,5 MPa <b>Colour</b> – Bright straw <b>Filtration µm</b> 215-235 (14x88) 180-200 (18x100) 115-125 (24x110)	PN-EN ISO 1183 PN-EN ISO 3451 Own method PN-EN ISO 1133 PN-EN ISO 527 PN-EN ISO 527 - Standard filtration Guideline filtration Guideline filtration	 EuCertPlast
<b>REGRANULATE LDPE RESULTANT BAGMAN</b> <i>WITHOUT WASHING/ WITHOUT WASHING E+</i>	Regranulate produced from post-production LDPE BAG of granules waste		<b>Average fill level</b> <9,0 % <b>Moisture</b> <0,1 % <b>Melt Flow Index MFI</b> 0,3÷1,1 g/10min (190°/216kg) <b>Colour</b> – Light ash <b>Filtration µm</b> 215-235 (14x88) 115 -125 (24x110)	PN-EN ISO 3451 Own method PN-EN ISO 1133 - Standard filtration Guideline filtration	 EuCertPlast
<b>REGRANULATE LDPE RESULTANT BLACK</b> <i>PREMIUM/STANDARD</i>	Regranulate produced from post-production waste and / or foil originating from selective collection (post-consumer LDPE waste)		<b>Density</b> 0,920 ÷0,950 g/cm <sup>3</sup> <b>Filling</b> < 4,0 % <b>Moisture</b> < 0,1 % <b>Melt Flow Index MFI</b> 0,4 ÷ 1,1 <b>Colour</b> : colour mix <b>Filtration µm</b> 215-235 (14x88) 180-200 (18x100) 115-125 (24x110)	PN-EN ISO 1183 PN-EN ISO 3451 Own method PN-EN ISO 1133 - Standard filtration Guideline filtration Guideline filtration	 EuCertPlast
<b>REGRANULATE LLDPE (STREETCH)</b>	Regranulate produced from post-production waste and / or foil originating		<b>Density</b> 0,918÷0,921 g/cm <sup>3</sup> <b>Moisture</b> < 0,1 % <b>Melt Flow Index MFI</b> 1,6÷3,0 g/10min (190°/216kg) <b>Tensile Modulus</b> 200÷260 MPa <b>Tensile Strength</b> 9,6÷11,5 MPa	PN-EN ISO 1183 Own method PN-EN ISO 1133 PN-EN ISO 527 PN-EN ISO 527	 EuCertPlast



	from selective collection (post-consumer LLDPE waste)		<b>Impact chk</b> 58-61 kJ/m <sup>2</sup> <b>Colour</b> – light straw <b>Filtration <math>\mu\text{m}</math></b> 215-235 (14x88) 180-200 (18x100) 115-125 (24x110)	PN-EN ISO 179-1 - Standard filtration Guideline filtration Guideline filtration	
<b>REGRANULATE LDPE RESULTANT BRIGHT (MIX)</b>	Regranulate produced from post-production waste and / or foil originating from selective collection (post-consumer LDPE waste)		<b>Density</b> 0,920 $\pm$ 0,950 g/cm <sup>3</sup> <b>Filling</b> < 4,0 % <b>Moisture</b> < 0,2 % <b>Melt Flow Index MFI</b> 0,30 $\div$ 1,4 <b>Colour</b> : light mix <b>Filtration <math>\mu\text{m}</math></b> 215-235 (14x88) 180-200 (18x100) 115-125 (24x110)	PN-EN ISO 1183 PN-EN ISO 3451 Own method PN-EN ISO 1133 - Standard filtration Guideline filtration Guideline filtration	 EuCertPlast
<b>REGRANULATE LDPE RESULTANT DARK (MIX)</b>	Regranulate produced from post-production waste and / or foil originating from selective collection (post-consumer LDPE waste)	<ul style="list-style-type: none"> <li>• <b>EXTRUSION BLOW MOULDING</b></li> <li>• <b>INTJECTION</b></li> </ul>	<b>Density</b> 0,920 $\pm$ 0,950 g/cm <sup>3</sup> <b>Filling</b> < 4,0 % <b>Moisture</b> < 0,2 % <b>Melt Flow Index MFI</b> 0,30 $\div$ 1,4 <b>Colour</b> : dark mix <b>Filtration <math>\mu\text{m}</math></b> 215-235 (14x88) 180-200 (18x100) 115-125 (24x110)	PN-EN ISO 1183 PN-EN ISO 3451 Own method PN-EN ISO 1133 - Standard filtration Guideline filtration Guideline filtration	 EuCertPlast
<b>REGRANULATE LDPE BLUE RESULTANT</b>	Regranulate produced from post-production waste and / or foil originating from selective collection (post-consumer LDPE waste)		<b>Density</b> 0,920 $\pm$ 0,950 g/cm <sup>3</sup> <b>Filling</b> < 4,0 % <b>Moisture</b> < 0,2 % <b>Melt Flow Index MFI</b> 0,30 $\div$ 1,4 <b>Colour</b> : blue mix <b>Filtration <math>\mu\text{m}</math></b> 215-235 (14x88) 180-200 (18x100) 115-125 (24x110)	PN-EN ISO 1183 PN-EN ISO 3451 Own method PN-EN ISO 1133 - Standard filtration Guideline filtration Guideline filtration	 EuCertPlast



<p><b>PEGRANULATE PP</b></p>	<p>Regranulate produced from post-production waste and/or selective collection waste (post-consumer big-bag waste)</p>	<ul style="list-style-type: none"> <li>• <b>EXTRUSION BLOW MOULDING</b></li> <li>• <b>INTJECTION</b></li> </ul>	<p><b>Density</b> 3,0 ÷ 5,0 g/cm<sup>3</sup> // 5 ÷ 20 g/cm<sup>3</sup>  <b>Filling</b> &lt; 5,0 %  <b>Moisture</b> &lt; 0,08 %  <b>Melt Flow Index MFI</b> 4,0 ÷ 5,0  <b>Colour</b> : light gray  <b>Filtration µm</b> 215-235 (14x88)  180-200 (18x100)  115-125 (24x110)</p>	<p>PN-EN ISO 1183  PN-EN ISO 3451  Own method  PN-EN ISO 1133  -  Standard filtration  Guideline filtration  Guideline filtration</p>	<p>-</p>
<p><b>CHALK FILLER 277K</b></p>	<p>Chalk filler produced on rLLDPE linear polyethylene matrix</p>	<ul style="list-style-type: none"> <li>• <b>EXTRUSION BLOW MOULDING</b></li> <li>• <b>INTJECTION</b></li> <li>• <b>FILM PRODUCTION</b></li> </ul>	<p><b>Density</b> 1,70 ÷ 1,75 g/cm<sup>3</sup>  <b>Filling</b> ≥ 75 %  <b>Moisture</b> &lt; 0,08 %  <b>Melt Flow Index MFI</b> 1,0 ÷ 1,2  <b>Colour</b> : white resulting  <b>Avarage particle size:</b> ok.2,5 µm</p>	<p>PN-EN ISO 1183  PN-EN ISO 3451  Own method  PN-EN ISO 1133  -  -</p>	<p>-</p>



Options	Packaging	Transport	Payment
<ul style="list-style-type: none"> <li>Product colouring in the mass</li> <li>Product filling on request (CaCO<sub>3</sub>, others)</li> <li>Product preparation with desired MFI/MFR</li> <li>Minimum order 1000 kg</li> </ul>	<ul style="list-style-type: none"> <li>Big-bag approx. 1200 kg (on request with polyethylene insert or bottom discharge)</li> <li>Full stretch Big Bag</li> <li>Cap + Big Bag spacer</li> <li>Pallet 105x105 (fumigated on request)</li> <li>Possibility of printing labels according to customer requirements including barcodes</li> <li>Product packaging (e.g. 25kg bags)</li> <li>Possibility of loading into sea containers</li> <li>Products protected against humidity</li> </ul>	<ul style="list-style-type: none"> <li>We offer the possibility to collect goods with our own transport (EXW)</li> <li>We offer the possibility to organise low-cost transport within Poland, Europe and the Far East (DAP)</li> </ul>	<ul style="list-style-type: none"> <li>First 3 transactions: prepayment</li> <li>Next shipments: payment term 30 days</li> </ul>

## WE INVITE YOU TO CONTACT US:

**Name:**

**e-mail:**

**Contact details:**

**NEWBORN PLASTIC Sp. z o.o.**  
ul. Leśna 11, 36-100 Kolbuszowa, POLAND  
NIP: 814-167-11-37  
REGON: 180609017

**biuro@newbornplastic.pl**  
Landline. +48 17 22 88 510  
Mob. phone +48 605 170 703



## LABORATORY

Since 2022, an important business unit of Newborn Plastic has been a state-of-the-art research laboratory responsible for advanced testing of raw materials processed at our plant. The products we manufacture are also included in the research. Our laboratory experts conduct research on raw materials at every stage of the recycling process. This gives us full control over its progress and allows us to make real-time adjustments. Thanks to this, our customers are guaranteed to receive a final product of the highest quality, with parameters perfectly suited to their needs. Excellent customer cooperation is ensured by innovative laboratory equipment and a team of qualified employees.

We prioritize the use of a wide range of testing methods in the determination of, among other things:

- Rheological parameters and specific density of the produced mixtures,
- Mechanical properties and resistance to impact operation,
- Composition of mixed polymers,
- The level of filling with minerals and other fillers,
- Color compatibility with the accepted color system,
- The surface moisture content of the packaged product.

Properly organized and equipped laboratory facilities make it possible to continuously analyze input materials and control the end result of the implemented process in accordance with generally accepted ISO standards.



**NEWBORN PLASTIC Sp. z o.o.**

ul. Leśna 11, 36-100 Kolbuszowa, POLAND

NIP: 814-167-11-37

REGON: 180609017

**biuro@newbornplastic.pl**

Landline. +48 17 22 88 510

Mob. phone +48 605 170 703



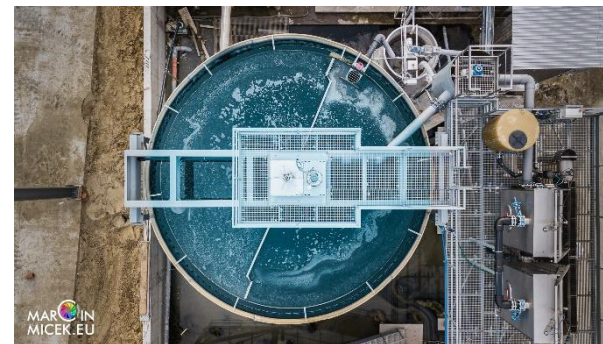
**PROCESS WATER PURIFICATION STATION**

To meet the world's water conservation needs, our company has set up its own process water treatment plant.

The closed-loop technology used at the plant enables real savings in natural resources, especially since process water losses are made up by rain. No technology offers as much potential for operational cost savings as process water treatment.

Water recovered entirely through the use of closed loop can significantly reduce waste washing costs and meet the company's environmental goals.

With effective and efficient process water treatment, Newborn Plastic can simultaneously achieve several economic and environmental goals.



### 24 TON MIXER

The Newborn Plastic plant is also equipped with two 24-ton mixers, which allow us to obtain the highest quality uniform products. Thanks to the technology used, we can maximally homogenize the product in terms of physicochemical properties of regranulate, i.e. material flow level, surface moisture, filtration, color homogeneity.



EuCertPlast CERTIFICATE

NewBorn Plastic has the EuCertPlast certificate for our regranulates.



**NEWBORN PLASTIC Sp. Z o.o.**

ul. Leśna 11, 36-100 Kolbuszowa, POLAND

NIP: 814-167-11-37

REGON: 180609017

**biuro@newbornplastic.pl**

Landline. +48 17 22 88 510

Mob. phone +48 605 170 703

